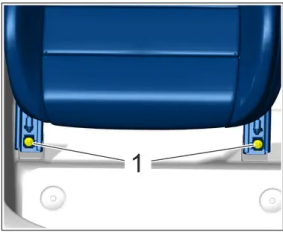


RM, 720119 Removing and installing front seat

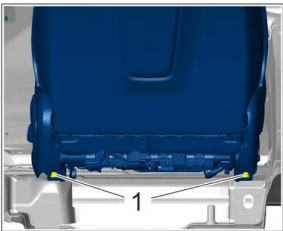
Technical values

◆ Location	◆ Description ◆ Type	◆ Basic value	◆ Lower tolerance	◆ Upper tolerance
Screws securing front seat rail to seat cross member	Item 1 Tightening torque	50 (37 ftlb.) Nm		



Screws

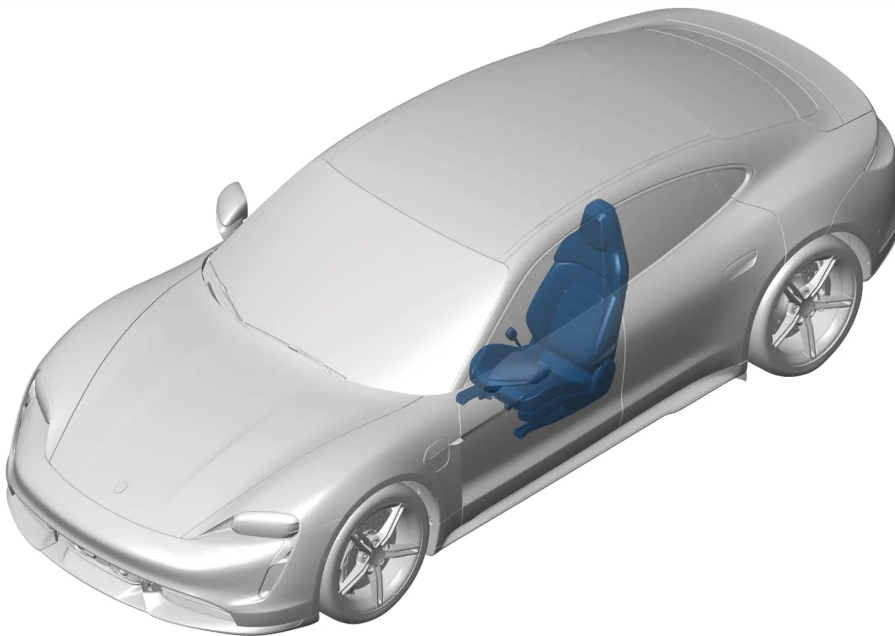
Screws securing rear seat rail to seat cross member	Item 1 Tightening torque	50 (37 ftlb.) Nm		
---	--------------------------	------------------	--	--



Screws

Installation position

Installation position



Installation position

## Removing front seat

### Information

Fastening screws and fastening nuts must not be re-used and must be replaced with new ones.

### Information

The terms "Ignition on" and "Starting engine" are re-defined for fully electric vehicles (battery electric vehicles - BEV).

#### Establishing operational readiness/Ignition on:

Prerequisites for establishing operational readiness: High-voltage battery is sufficiently charged, remove vehicle charging cable from the vehicle charge port, put driver's key in the emergency start tray.

Establishing operational readiness automatically: Get into the vehicle and close the driver's door. The driver's key is recognised inside the vehicle. Operational readiness is established.

Establishing operational readiness manually: Press Start/Stop switch. The driver's key is recognised inside the vehicle. Operational readiness is established.

#### Establishing operational readiness/Starting engine:

Establish operational readiness and engage transmission range. The vehicle is now ready to drive and can be moved.

#### Ending operational readiness/Switching off ignition

Ending operational readiness automatically: Get out of the vehicle with the driver's key and close the driver door. The driver's key is no longer detected outside the vehicle. Operational readiness ends.

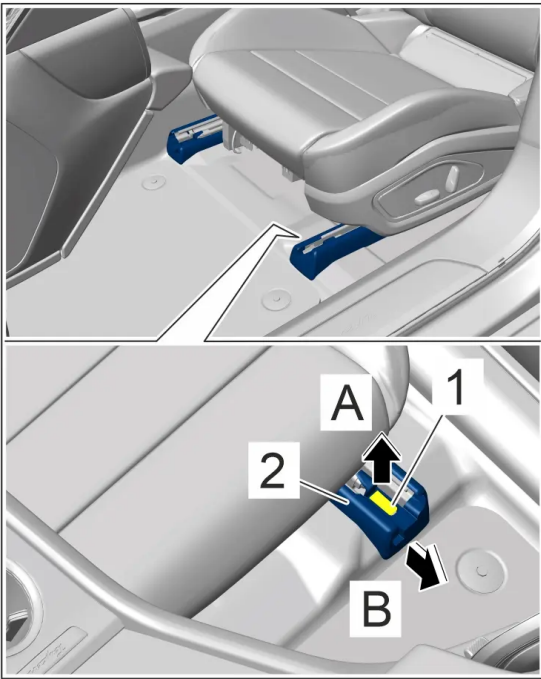
Ending operational readiness manually: Press Start/Stop switch until the instrument cluster is switched off.

#### Ending driving readiness/Stopping engine

Vehicle is stationary: Press the **P** button on the instrument cluster. The vehicle is parked.

**1** Move front seat to its rear end position.

**2** Remove cover on seat rail -2-.

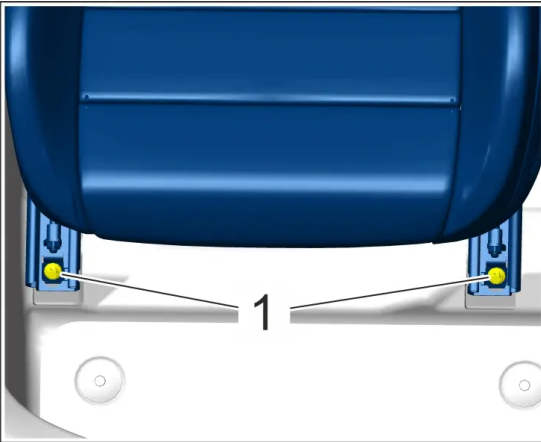


Cover on seat rail

2.1 Release locking lug -1- ( -arrow A- ).

2.2 Remove cover on seat rail -2- ( -arrow B- ).

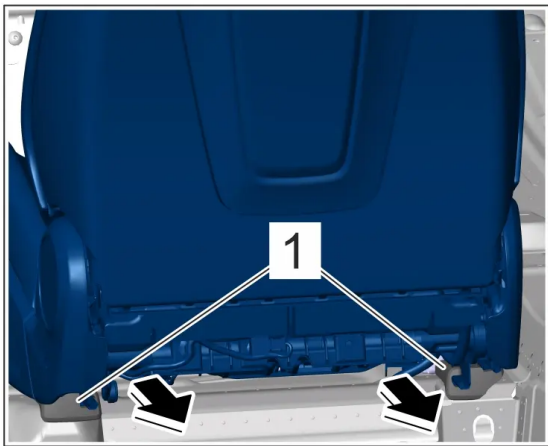
3 Unscrew screws -1- .



Screws

4 Move front seat to its front end position.

5 Release and pull off covers on seat rails -1- ( -Arrows- ).

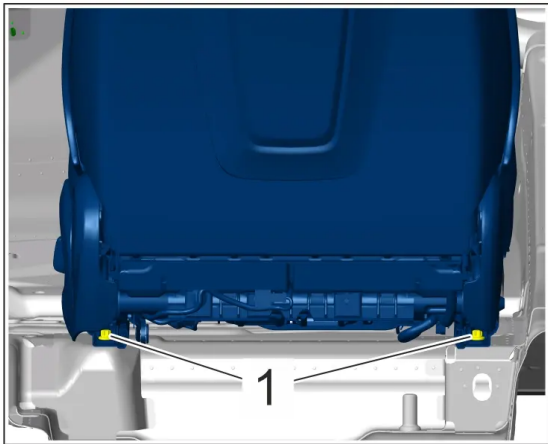


Cover on seat rail

6 Loosen ground strap for battery.

**Observe wait times.**

7 Unscrew screws -1-.



Screws

## ⚠ WARNING

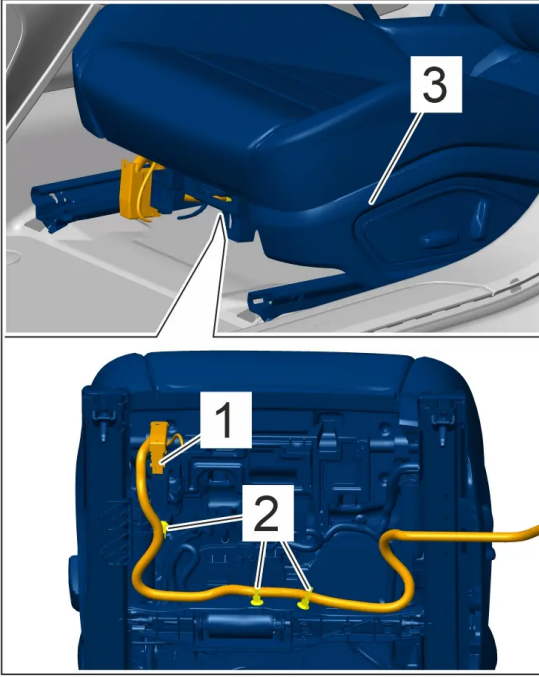
### Improper handling of airbag unit

#### Triggering the airbag unit.

#### System faults can occur.

- Switch off ignition and remove ignition key or handheld transmitter.
- A voltage supply (e.g. battery charger) must not be connected to the external power supply/jump-lead starting terminals.
- Disconnect the battery and insulate the ground strap so that all contact with a ground carrier is avoided.
- Wait 1 minute after disconnecting the battery.
- Only disconnect the connector from the triggering unit after the waiting time has elapsed.
- Make sure that no foreign objects are located in front of the airbag unit during installation.
- Replace damaged parts during removal.
- Always position airbag units so that the blow-out opening is facing upwards, e.g. crest on driver's airbag.
- Do not place any objects on the airbag units.
- If removed for an extended period, the airbag units must be stored in a safe place.
- Airbag units must not come into contact with grease, oil, cleaning agents, liquids or similar substances.
- Do not expose airbag units to temperatures of more than 90 °C.
- Do not remove the short-circuit spring on the plug contacts.
- Triggering and preparations may only be carried out by skilled staff, supervised by a second responsible person.
- Before disposal, the airbag unit must be rendered harmless by triggering it electrically while observing all precautionary measures, thereby preventing it from being used incorrectly.

8 Remove front seat -3-.



Electric plug connection

**Information**

The number of plug connections can vary, depending on equipment.

8.1 Release and disconnect electric plug connection -1-.

8.2 Unclip clips -2-.

8.3 Remove front seat -3-.

**Installing front seat**

**NOTIFICATION**

**Incorrect line routing**

**Risk of damage to lines and hoses**

**Malfunction and fault memory entry on control unit**

- Avoid small bending radii when routing lines.
- File down edges and burrs in the routing area or mask them with adhesive tape.
- Maintain a sufficient distance from components exposed to high temperatures while driving.

**Information**

The terms "Ignition on" and "Starting engine" are re-defined for fully electric vehicles (battery electric vehicles - BEV).

**Establishing operational readiness/Ignition on:**

Prerequisites for establishing operational readiness: High-voltage battery is sufficiently charged, remove vehicle charging cable from the vehicle charge port, put driver's key in the emergency start tray.

Establishing operational readiness automatically: Get into the vehicle and close the driver's door. The driver's key is recognised inside the vehicle. Operational readiness is established.

Establishing operational readiness manually: Press Start/Stop switch. The driver's key is recognised inside the vehicle. Operational readiness is established.

### Establishing operational readiness/Starting engine:

Establish operational readiness and engage transmission range. The vehicle is now ready to drive and can be moved.

### Ending operational readiness/Switching off ignition

Ending operational readiness automatically: Get out of the vehicle with the driver's key and close the driver door. The driver's key is no longer detected outside the vehicle. Operational readiness ends.

Ending operational readiness manually: Press Start/Stop switch until the instrument cluster is switched off.

### Ending driving readiness/Stopping engine

Vehicle is stationary: Press the **P** button on the instrument cluster. The vehicle is parked.

### Information

Fastening screws and fastening nuts must not be re-used and must be replaced with new ones.

### WARNING

#### Incorrect handling of safety bolts

##### Danger of injury

##### Loss of torque

- Always use new screws or nuts following removal.
- Comply with instructions for repairs.
- Observe specified tightening torques.
- Carry out a visual inspection of parts used.

**1** Installation is performed in reverse order.

**2 Replace** screws and tighten to the specified tightening torque.

Tighten screws to  Tightening torque 50 (37 ftlb.) Nm

.

Tighten screws to  Tightening torque 50 (37 ftlb.) Nm

.

### Subsequent work

#### Subsequent work

**1**

**2X00IN Work instructions after disconnecting the 12-volt battery**